

Installation Instructions

安裝說明書

STEERING RACK BUSHING -
SOLID ALUMINUM
方向機鐵套-鋁合金製 #Q0537

Application 適用車型

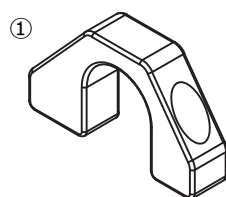
Toyota TownAce / LiteAce '08- (S400)

Caution 注意事項

- Installation is recommended to be performed by licensed mechanics with necessary tools to ensure safety. Incorrect installation may cause injury, damage to the product or vehicle.
安裝建議由合格的技師及工具執行以確保安全。安裝錯誤可能對人員、產品及車輛造成傷害。
- Note the routing of wires and cables before installation, or please refer to factory manual.
安裝前請事先記下線路的安裝路徑及位置以維持原廠配置。有疑問時請參考原廠手冊。
- Tighten bolts and nuts firmly by using handtools, and with specified torque if mentioned.
安裝過程請使用手動工具確實鎖緊螺帽及螺絲。如有特別註明請依照說明指示的扭力上鎖。

Instructions 安裝說明

Components 內含配件



Passenger side U-bracket
乘客座側U型固定環
1pcs



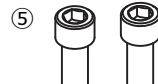
Driver side bush - Front
駕駛座側皿型鐵套 - 前
(14x24.5mm)
1pcs



Washer
華司
(13x34x3t)
2pcs



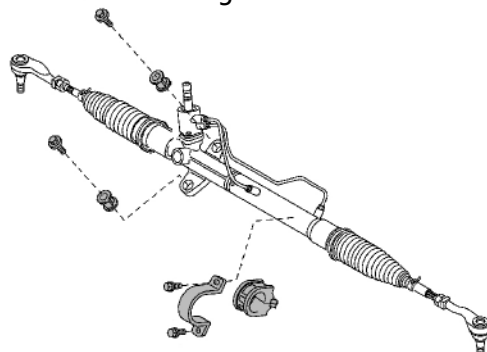
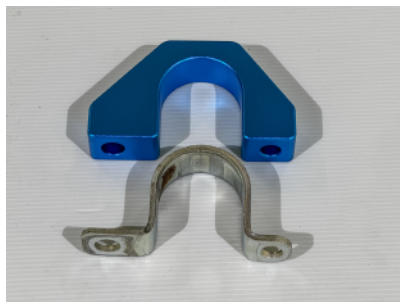
Driver side bush - Rear
駕駛座側皿型鐵套 - 後
(12x22.5mm)
1pcs



Bolt - Hex socket
螺絲 - 內六角
(M12x1.25x30)
2pcs

1. Remove the steering rack assembly from the vehicle. Then remove the bushes from the steering rack.

將方向機總成卸下車輛，並將橡膠襯套從方向機上拆除。



2. Install the steering rack with the new bushes and bracket to the vehicle. (See below pic)

Bushing ② & ③ require pressing or hammering into the bores of steering rack housing.

安裝新的襯套及固定座，並將方向機裝回車輛。(見下圖)

皿形襯套 ② & ③ 須使用液壓裝置或敲擊方式壓入方向機孔中。

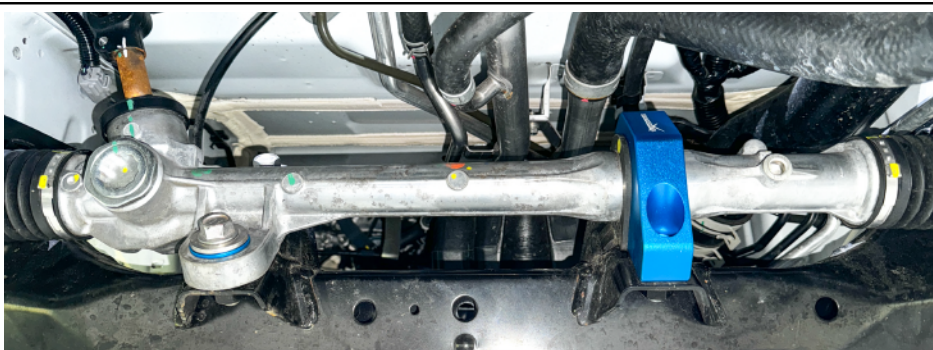
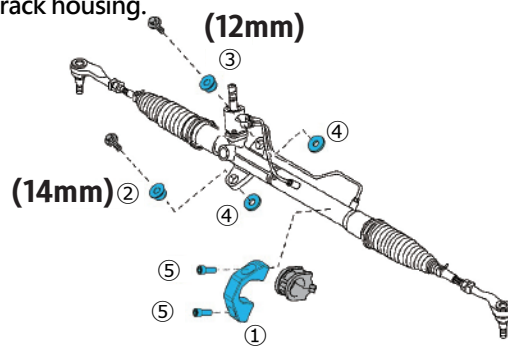


Illustration of installed state 安裝完成示意圖