

Installation Instructions

安裝說明書

Front Inner Bumper Brace

前保桿內鐵拉桿

#Q1458

Application 適用車型

Toyota Townace '08-
(Truck Models Only / 貨車車型專用)

Components 內含配件

- | | |
|--------------------------------------|------|
| ① Brace 結構桿..... | 1pcs |
| ② Flange bolt 凸緣螺絲 (M8x1.25x16)..... | 1pcs |
| ③ Nylock nut 尼龍螺帽 (M8x1.25)..... | 1pcs |
| ④ Flange bolt 凸緣螺絲 (M6x1.0x16) | 2pcs |
| ⑤ Nylock nut 尼龍螺帽 (M6x1.0) | 2pcs |

M8x1.25

- | |
|------------------------------|
| ② Flange bolt + ③ Nylock nut |
| ② 凸緣螺絲 + ③ 尼龍螺帽 |

M6x1.0

- | |
|------------------------------|
| ④ Flange bolt + ⑤ Nylock nut |
| ④ 凸緣螺絲 + ⑤ 尼龍螺帽 |

原廠M6x1.0

原廠M6x1.0

Instructions 安裝說明

1. Remove the front bumper and plastic air duct.

(vertical parts of the radiator support)

拆卸前保桿以及內部的塑膠導風版。

(水箱架左右兩側直立部位)

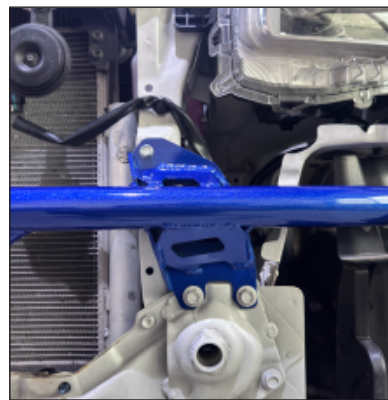


2. Install the inner bumper brace.

將結構桿安裝至車輛。

※ Trimming/deleting of the air ducts are required for installation

※ 導風版須加工修剪或拆除不安裝



Caution 注意事項

• Installation is recommended to be performed by licensed mechanics with necessary tools to ensure safety. Incorrect installation may cause injury, damage to the product or vehicle.

安裝建議由合格的技師及工具執行以確保安全。安裝錯誤可能對人員、產品及車輛造成傷害。

• Note the routing of wires and cables before installation, or please refer to factory manual.

安裝前請事先記下線路的安裝路徑及位置以維持原廠配置。有疑問時請參考原廠手冊。

• Tighten bolts and nuts firmly by using handtools, and with specified torque if mentioned.

安裝過程請使用手動工具確實鎖緊螺帽及螺絲。如有特別註明請依照說明指示的扭力上鎖。

Installation Instructions

安裝說明書

Front Inner Bumper Brace
前保桿內鐵拉桿
#Q1458

Instructions 安裝說明

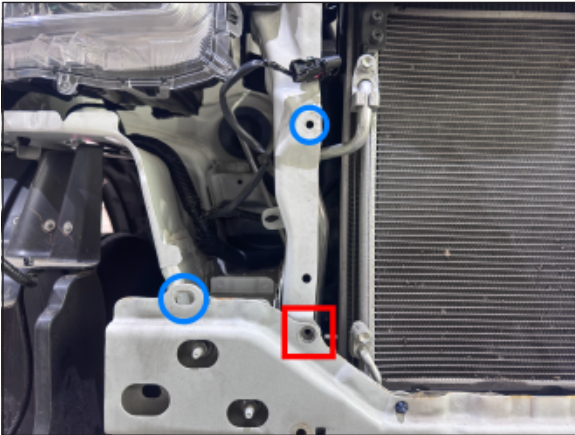
LH side
左側

Reuse the M8 factory bolts (Circled in red)

紅圈處沿用原廠M8螺絲安裝。

Install the supplied M6 bolt and nut (Circled in blue)

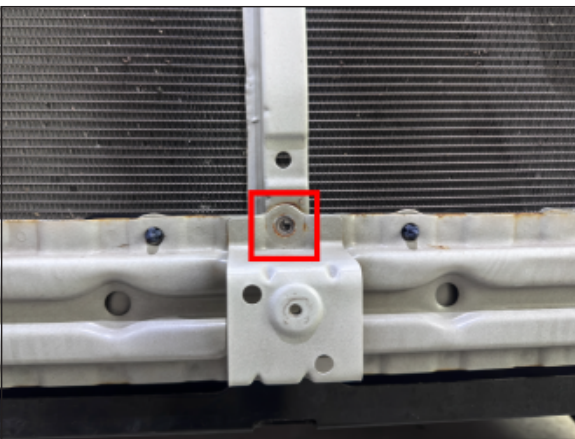
藍圈處使用附件的M6螺絲及螺帽安裝。



Lower center part
中間

Reuse the factory bolt (circled in red)

紅圈處沿用原廠螺絲安裝。



RH side
右側

Reuse the M6 factory bolt (Circled in red)

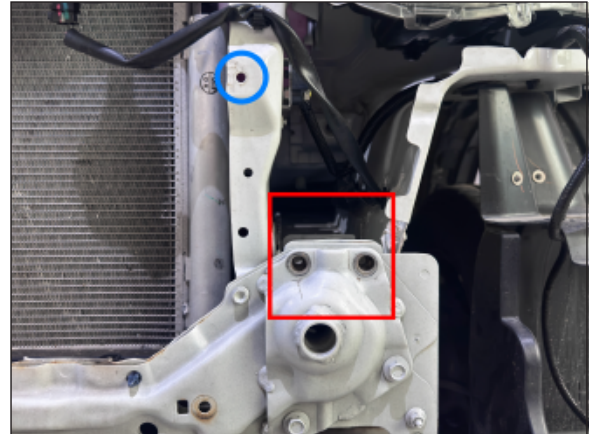
紅圈處沿用原廠M6螺絲安裝。

Install the supplied M6 & M8 bolts and nuts (Circled in blue)

藍圈處使用附件的M6&M8螺絲及螺帽安裝。

※ Please relocate the air temp sensor on the air duct to the upper side of the radiator support using a zip tie.

※ 導風板上方的溫度感知器須移至上方以束帶固定。



3. Once installed, reinstall the bumper

安裝完成後，將保桿裝回車輛。



Illustration of installed state 安裝完成示意圖

Caution 注意事項

- Installation is recommended to be performed by licensed mechanics with necessary tools to ensure safety. Incorrect installation may cause injury, damage to the product or vehicle.
安裝建議由合格的技師及工具執行以確保安全，安裝錯誤可能對人員、產品及車輛造成傷害。
- Note the routing of wires and cables before installation, or please refer to factory manual.
安裝前請事先記下線路的安裝路徑及位置以維持原廠配置，有疑問時請參考原廠手冊。
- Tighten bolts and nuts firmly by using handtools, and with specified torque if mentioned.
安裝過程請使用手動工具確實鎖緊螺帽及螺絲，如有特別註明請依照說明指示的扭力上鎖。